



Automated Data Analysis Plotting Toolset (ADAPT)



Cooper Environmental's Xact 625 continuously measures metals to generate large amounts of high quality data. Offline analysis of this data can be a time and resource intensive process for environmental agencies. The Automated Data Analysis Plotting Toolset (ADAPT) enables users to manage and analyze Xact-measured metals in near-real time through a number of relevant graphical tools.

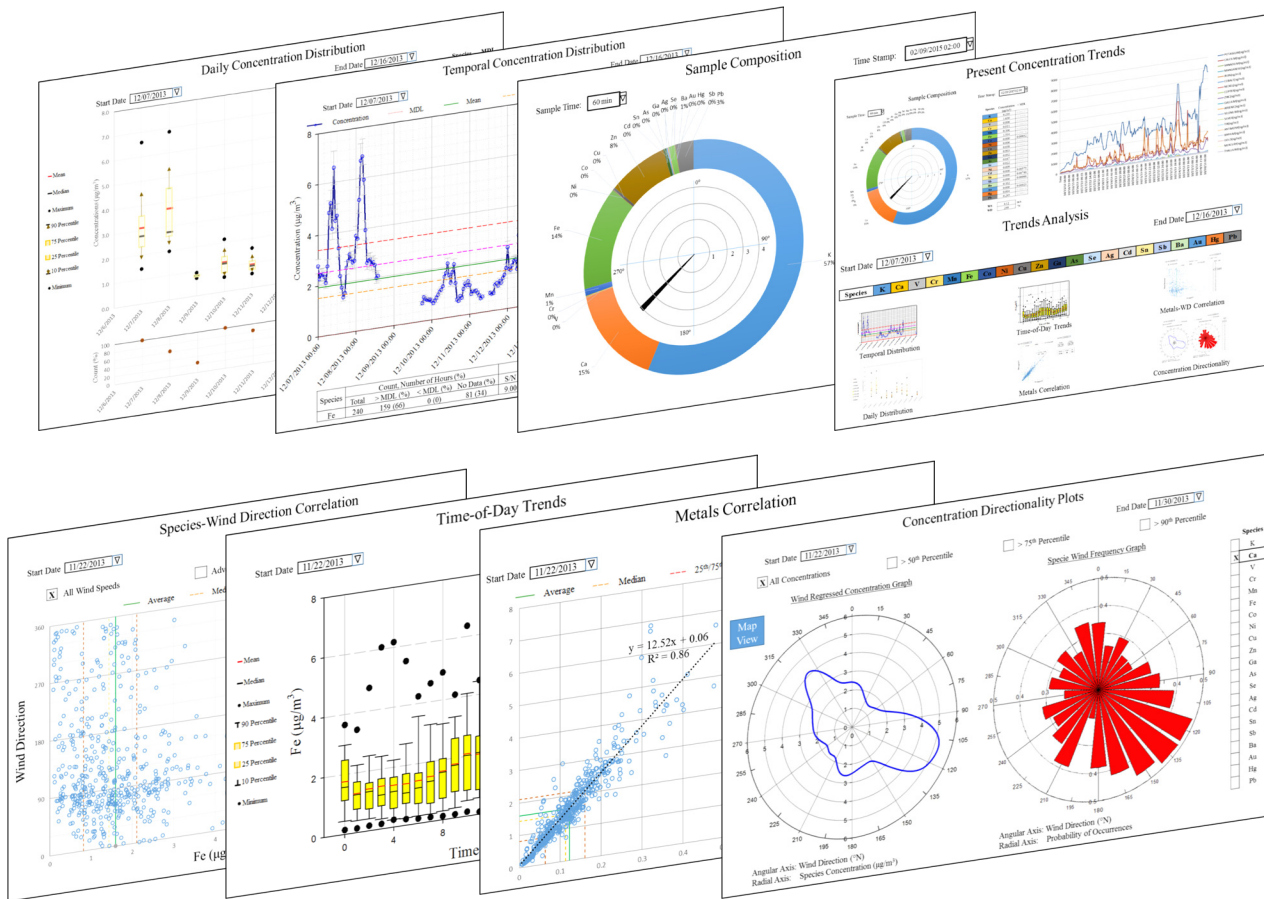
ADAPT produces research-quality graphics to provide a better understanding of the metal emissions influencing the monitoring site. Metal concentrations are analyzed in multiple forms to deliver unique insight on the temporal and variability trends. The software program also incorporates meteorological data to automatically estimate directionality of the peak metal concentrations observed at the monitoring site. This toolset will equip the Xact user with a better understanding of the metals data to make decisions towards managing metal emissions in the air shed.

Benefits

- Graphical reports accessible in near-real time
- Results displayed with numerous journal-quality graphics
- Cost effective resource for monitoring the efficacy of the control strategies
- Drastically reduces data processing time
- Designed by air quality researchers with over 50 years of combined experience
- Beneficial for air quality managers and environmental agencies

Graphical Features

ADAPT produces a variety of graphics to examine Xact-measured metals data collected over time and displays them through an intuitive user interface on the instrument. These plots allow the user to examine the metals contribution to each sample in addition to the concentration trends over time. The graphics are designed to track the high metals concentration events and capture the variability resulting from source emission patterns. Wind regression and other regression graphics included in the ADAPT provide an estimate of the directionality of peak metal concentrations.



Features of ADAPT Graphics

- Intuitive user interface displayed on Xact 625
- Hourly metals composition efficiently displayed
- Data analysis of metals measurements over user-selected time periods
- Temporal analysis to reveal peak concentration events
- Daily and time-of-day distributions to capture variability
- Correlation examination for identifying co-varying metals emissions
- Automated wind regression analysis for estimating source directionality

Cooper Environmental Services, LLC
9403 SW Nimbus Ave.
Beaverton, OR 97008
T: 503-670-8127 F: 503-624-2120
www.cooperenvironmental.com

SEQUOPRO

sequopro@sequopro.es
www.sequopro.es